

## Customers look to you for information

about the yard and household chemicals that they purchase. Home-use pesticides pose a particular risk to our stormwater system.



Pollution of our local waterways can occur by washing pesticides and other chemicals such as motor oil into storm drains. Contaminated runoff is a major cause of environmental pollution in Oklahoma.

The purpose of this brochure is to assist the managers of garden supply stores to **educate employees** on how to advise customers about safe pesticide use and disposal. Your employees can help keep the public educated about pesticide use. Your business and its employees can play a big role in helping to protect our streams, rivers and lakes in Oklahoma.

### Additional Resources

Visit the Green Country Stormwater Alliance web site listed below for more details about stormwater protection, including pesticides and household waste disposal.



**Green Country Stormwater Alliance**  
[www.stormwaterok.net](http://www.stormwaterok.net)

### Contact Information:

For information about the Green Country Stormwater Alliance, contact INCOG at 918-584-7526 or by email at [stormwater@incog.org](mailto:stormwater@incog.org). For local information, contact your city or county stormwater coordinator.

For more information about stormwater protection, contact the Oklahoma Department of Environmental Quality (DEQ) Water Quality Division at 405-702-8100 or visit the DEQ web site at [www.deq.state.ok.us/WQDnew/stormwater/index.html](http://www.deq.state.ok.us/WQDnew/stormwater/index.html)

For stormwater related complaints, call the DEQ statewide hotline at 1-800-522-0206. This number is answered 24 hours a day, 7 days a week. Citizens may fill out an online complaint form at the DEQ web site at [www.deq.state.ok.us/ECLShew/Complaints/onIncpl.htm](http://www.deq.state.ok.us/ECLShew/Complaints/onIncpl.htm) and submit it electronically to the DEQ. The site also provides contact links to DEQ.

For household pollutant disposal options, contact the Metropolitan Environmental Trust at 918-584-0584 or visit [www.metrecycle.com](http://www.metrecycle.com).

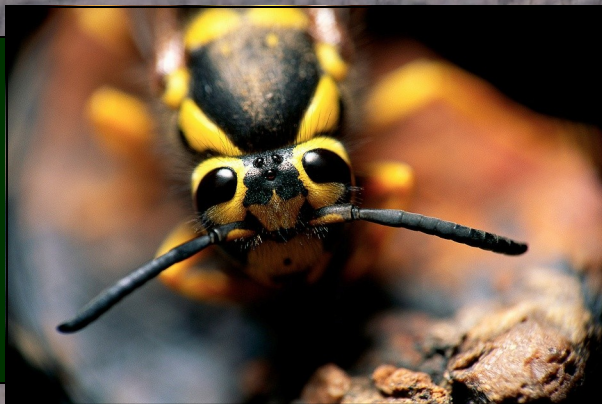
This brochure is not intended to provide complete guidance on the use or disposal of pesticides. Always refer to package labeling or other credible information sources. This brochure is for general education purposes only.

Brochure Rev.: 2017-9



## A Retailer's Guide to Pesticide Basics





# Retailer Customer Considerations for Over-the-Counter Pesticides

## Talk To Your Customers:

- Have they identified the pests?
- Do they know which chemicals to use?
- Do they know of alternative treatments?
- Do they know how to view the labels and what instructions must be followed?
- Do they know how the product will affect pets and beneficial insects?
- Do they know how to get safety information and what protective gear they will need?
- Do they know how to properly and safely use the product, especially concentrates?
- Do they know what application conditions are needed for product use (sunlight, season, rainfall, mowing, watering, etc.)?
- Do they know about the possible need for repeat applications?
- Do they know how to properly and safely clean up applicators and spills?
- Do they know how to properly dispose of unused product and waste materials?

Many pesticides are harmful to people, animals and our environment. Results achieved through pesticides are often temporary leading to the need for repeat treatments. Over time some pests become resistant which reduces pesticide effectiveness.

## Product Display Area Management:

- Your store's chemical products area has one of the greatest potentials for injury to employees and customers.
- Many products are concentrates of toxic chemicals in glass containers that are openly positioned on shelves.
- Some chemicals are sensitive to strong sunlight or extremes of temperatures.
- Many strong chemicals, such as acids and organic toxics like pesticides, require special types of absorbents and other supplies for proper spill cleanup.
- Disposal of waste cleanup materials may require special containers and handling.
- Spill cleanup kits, along with kit use instructions, should be within easy access.
- Employees should be trained in all aspects of handling, stocking and spill cleanup.
- Floor managers should be knowledgeable to address questions and concerns of customers about chemical contact and safety.
- Shelves should be sturdy, and container placement on shelves should minimize falls.
- Aisles between product displays should be wide enough to minimize bumping by customers and their shopping carts.

## Pesticide Use Tips for Customers:

- Read labels completely to learn important information on product use, safety and cleanup.
- Be certain which pesticide is the best option for controlling the target pests.
- Use the manufacturer's hotline and customer service for your questions; don't guess or proceed without knowing.
- Minimize pesticide runoff by not applying during or just before rainfall with runoff.
- When mixing solutions from concentrates, make sure the container is labeled with the product, intended use, date and expiration.
- Use only the amounts and application procedures recommended by the manufacturer. Applying overly concentrated solutions can have dangerous consequences for the environment.
- Always wear the recommended safety gear when working with pesticides.

The following EPA website <https://www.epa.gov/pesticides/> has a large volume of information about pesticide regulation, use, proper disposal and EPA's Integrated Pest Management (IPM) program that provides alternatives to minimize the use of pesticides as an environmental protection strategy.